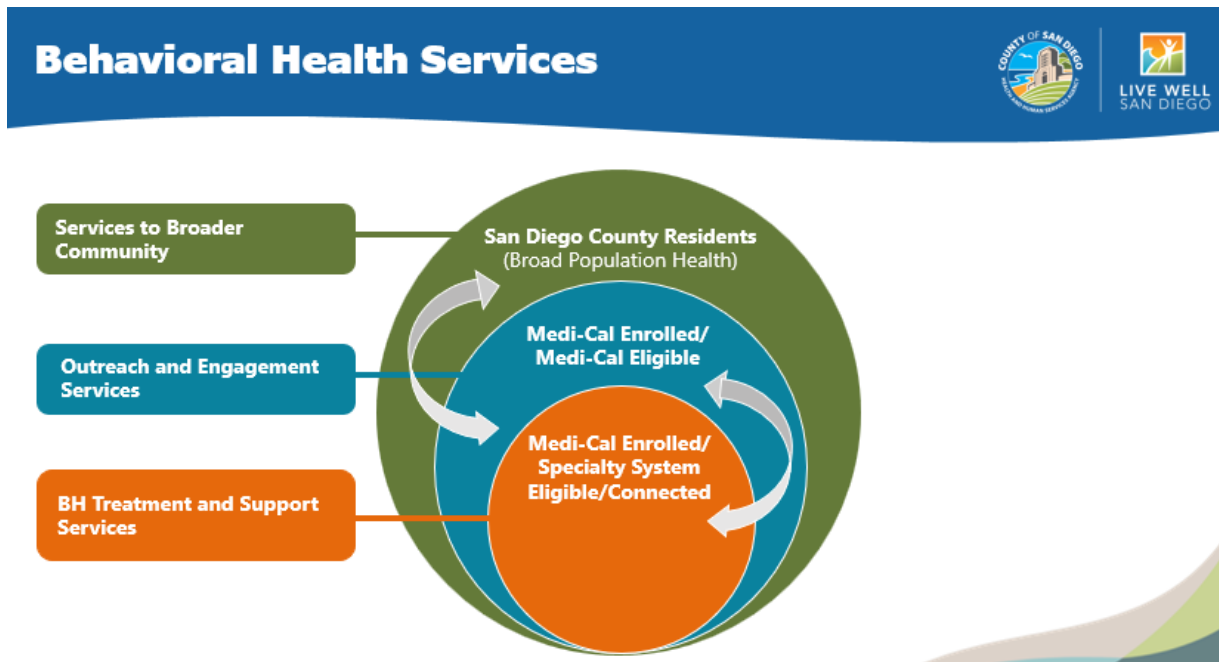


San Diego County as a Medi-Cal Behavioral Health Plan

The California Department of Health Care Services (DHCS) is the agency responsible for the administration of the Medicaid program. In California, Medicaid is referred to as “Medi-Cal.”

Medi-Cal members in California receive **specialty behavioral health services** through Counties. The San Diego County HHS Behavioral Health Services (BHS) Department administers an **integrated Behavioral Health Plan (BHP)** which includes both the Mental Health Plan (MHP) and the Drug Medi-Cal Organized Delivery System (DMC-ODS) Plan.



Slide source: BHS Director's March 2024 EQR Opening presentation

BHS provides a broad range of services. The graphic above illustrates both the spectrum of services and the populations served. Each level in the BHS system serves a distinct purpose and specific subsets of the local population, though people can and will move in and out of these levels at different points in their lives.

- BHS' most core function is as a **health plan**, represented by the smallest circle, providing specialty mental health and substance use disorder services for Medi-Cal members with serious mental illness and substance use disorder. To support this, BHS maintains a coordinated system of care through our **network of contracted community providers** and by providing **direct services** at the San Diego County Psychiatric Hospital, Edgemoor Skilled Nursing Facility, and the County-operated clinics across the region.
- BHS' work as a health plan also informs the BHS role as a **public health entity**. In this role, represented by the largest circle, BHS serves the entire San Diego County community through screening programs and broad prevention-focused public health messaging. This is something BHS has grown in building BHS' epidemiological and outreach capacity.
- Between these two service levels BHS also supports individuals who are Medi-Cal Enrolled but not receiving specialty behavioral health services, and people who may be eligible for Medi-Cal but are not currently enrolled. For this population, BHS supports more tailored outreach and engagement for those in need of specialized services, such as harm reduction and in home outreach teams; and work to ensure effective partnerships with Managed Care Plans (MCPs).
- BHS' work across all of these domains is driven by a population health approach and a focus on data integration efforts. BHS serves many San Diegans regardless of their Medi-Cal status due in large part to how integrated data has informed strategies, services, and capacity.

MEMBER SERVICES: BHS clients are welcome to visit the [Consumers and Families page](#) for information on the Beneficiary Handbooks as well as how to access services through the San Diego Access & Crisis Line (ACL) at [1-888-724-7240](tel:1-888-724-7240) or the [Searchable Provider Directory](#).

San Diego County is a **Drug Medi-Cal Organized Delivery System (DMC-ODS) Plan** that covers Medi-Cal members for substance use disorder services that are delivered through a contracted network of providers.

- Screening, Brief Intervention, Referral to Treatment and Early Intervention (for Members under age 21)
- Withdrawal Management (residential and ambulatory)
- Intensive Outpatient Treatment
- Outpatient Treatment
- Narcotic Treatment Programs
- Recovery
- Care Coordination (delivered within treatment programs)
- Clinician Consultation
- Medications for Addiction Treatment (also known as Additional Medication Assisted Treatment or MAT)
- Residential Treatment (ASAM Levels 3.1, 3.3, and 3.5)
- Certified Peer Support Services (delivered within treatment programs)
- Contingency Management (delivered through providers as part of the pilot period)

San Diego County as a **Mental Health Plan (MHP)** covers Medi-Cal members for **specialty mental health services** that are delivered through a network of providers that includes County-run programs and contracted providers.

- Mental Health Services
- Medication Support
- Crisis Intervention
- Mobile Crisis Services
- Crisis Stabilization
- Adult Residential Treatment
- Crisis Residential Treatment
- Psychiatric Health Facility Services
- Psychiatric Inpatient Hospital Services
- Targeted Case Management
- Certified Peer Support Services (typically delivered within treatment programs)
- Day Treatment Intensive Services
- Day Rehabilitation
- Intensive Care Coordination (for Members under the age of 21)
- Intensive Home-Based Services (for Members under the age of 21)
- Therapeutic Behavioral Services (for Members under the age of 21)
- Therapeutic Foster Care (for Members under the age of 21)

Medi-Cal members receive physical care services through Medi-Cal **Managed Care Plans (MCP)**. There are [4 MCPs in San Diego County](#): Blue Shield of California Promise Health Plan, Community Health Group Partnership Plan, Kaiser Permanente, and Molina Healthcare of California. In addition to physical care and benefits such as Enhanced Care Management (ECM) and Community Supports (CS), MCPs also cover **non-specialty mental health (NSMH) services**:

- Mental health evaluation and treatment, including individual, group and family psychotherapy
- Psychological and neuropsychological testing, when clinically indicated to evaluate a mental health condition
- Outpatient services for purposes of monitoring drug therapy
- Psychiatric consultation
- Outpatient laboratory, drugs, supplies, and supplements
- Care in Emergency Departments
- Medication for Addiction Treatment (MAT) provided in primary care, inpatient hospital, EDs, and other medical settings
- Alcohol and Drug Screening, Assessment, Brief Intervention, and Referral to Treatment (SABIRT) in Primary Care settings